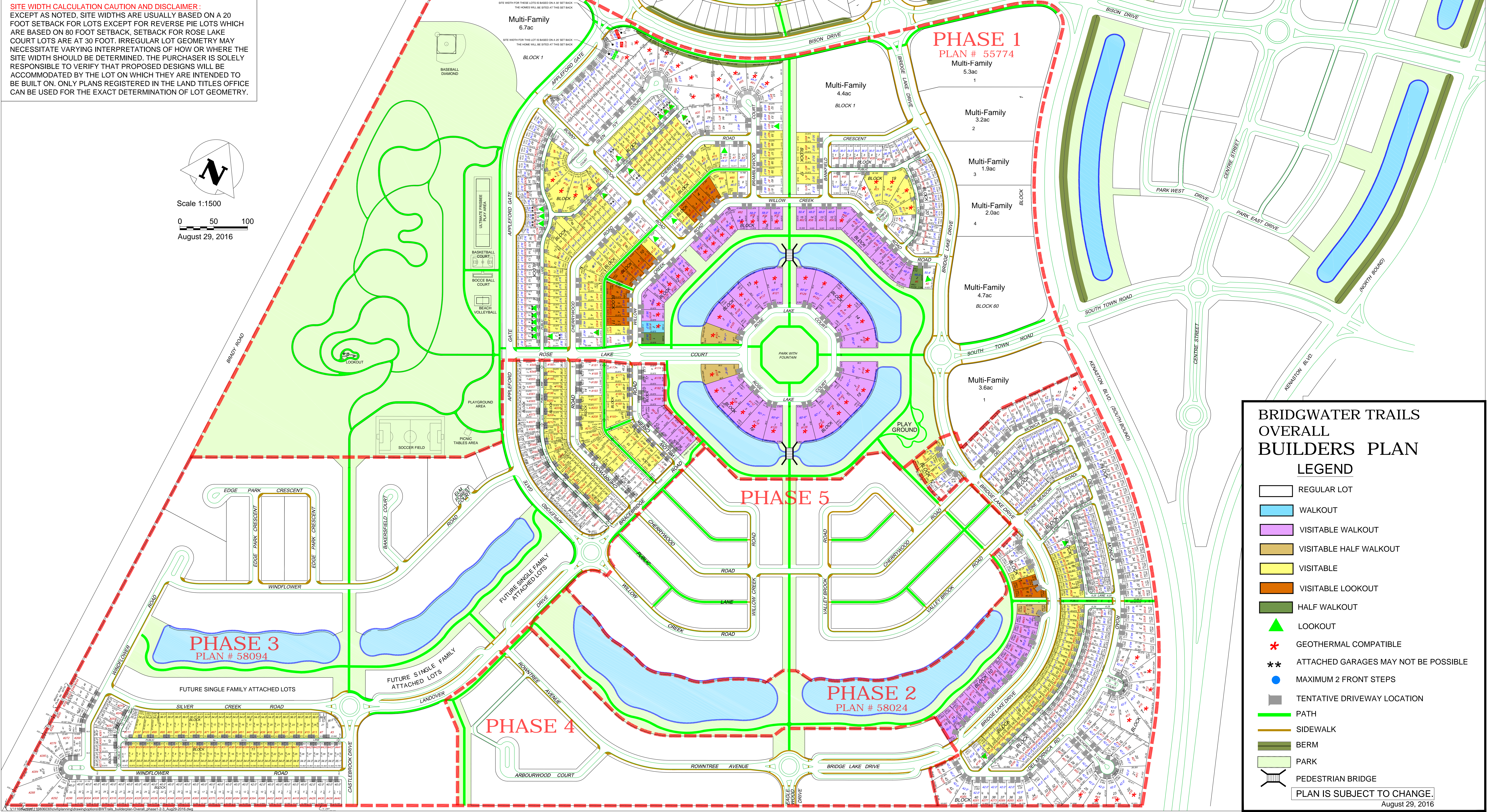
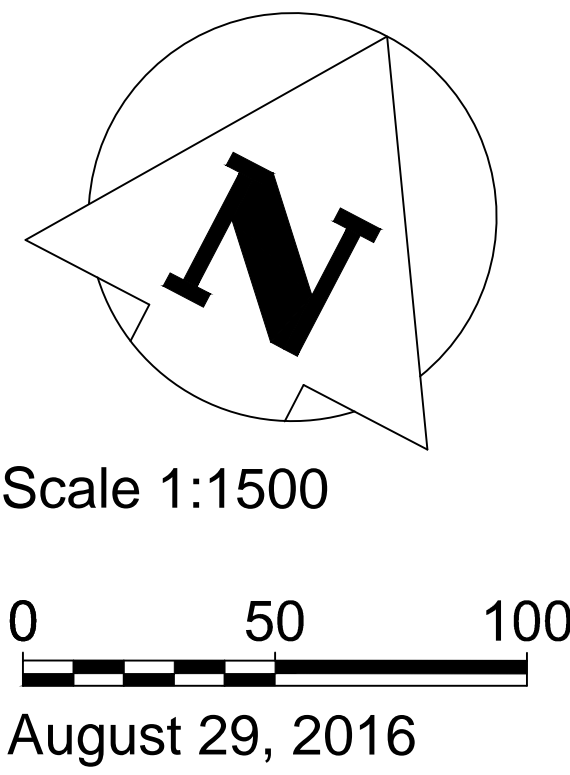


SITE WIDTH CALCULATION CAUTION AND DISCLAIMER:
EXCEPT AS NOTED, SITE WIDTHS ARE USUALLY BASED ON A 20 FOOT SETBACK FOR LOTS EXCEPT FOR REVERSE PIE LOTS WHICH ARE BASED ON 80 FOOT SETBACK. SETBACK FOR ROSE LAKE COURT LOTS ARE AT 30 FOOT. IRREGULAR LOT GEOMETRY MAY NECESSITATE VARYING INTERPRETATIONS OF HOW OR WHERE THE SITE WIDTH SHOULD BE DETERMINED. THE PURCHASER IS SOLELY RESPONSIBLE TO VERIFY THAT PROPOSED DESIGNS WILL BE ACCOMMODATED BY THE LOT ON WHICH THEY ARE INTENDED TO BE BUILT ON. ONLY PLANS REGISTERED IN THE LAND TITLES OFFICE CAN BE USED FOR THE EXACT DETERMINATION OF LOT GEOMETRY.



**BRIDGWATER TRAILS
OVERALL
BUILDERS PLAN
LEGEND**

- REGULAR LOT
- WALKOUT
- VISITABLE WALKOUT
- VISITABLE HALF WALKOUT
- VISITABLE
- VISITABLE LOOKOUT
- HALF WALKOUT
- LOOKOUT
- GEOTHERMAL COMPATIBLE
- ATTACHED GARAGES MAY NOT BE POSSIBLE
- MAXIMUM 2 FRONT STEPS
- TENTATIVE DRIVEWAY LOCATION
- PATH
- SIDEWALK
- BERM
- PARK
- PEDESTRIAN BRIDGE

PLAN IS SUBJECT TO CHANGE.

August 29, 2016